

**MAXXMAR WINDOW FASHIONS**  
 150 Bator Road, Toronto, Ontario M9M 1H1  
 Tel: 416-742-6299 - Toll Free: 1-866-916-6299  
 Fax: 416-742-1772  
 www.maxxmar.com

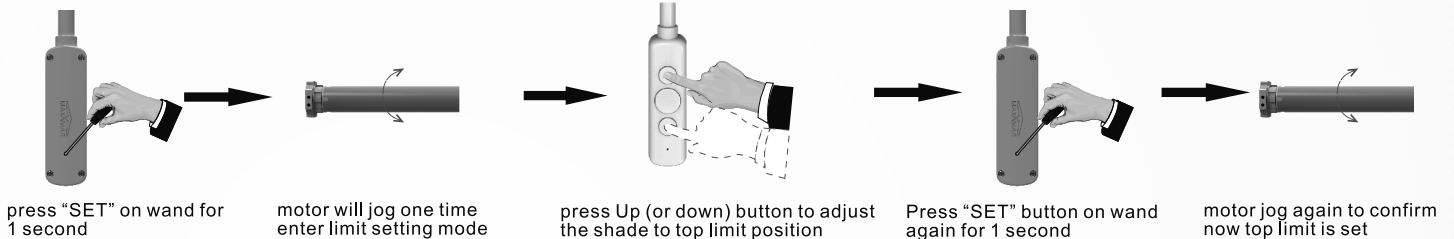


# MAXXMAR™ WINDOW FASHIONS

## Supreme MaxxMotor Solo A1 Instructions

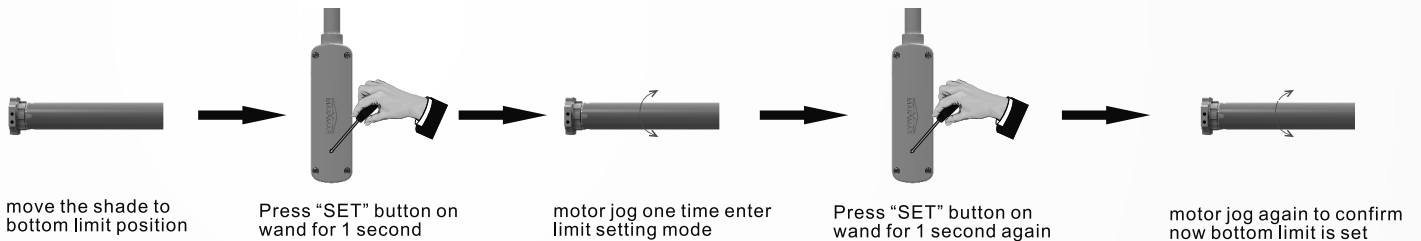
### 1. set top limit

PS: No action in 30s, motor will quit limit set mode automatically



### 2. set bottom limit

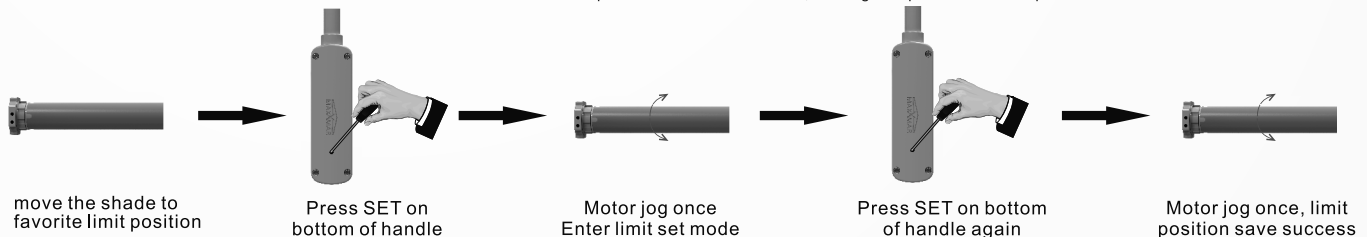
PS: No action in 30s, motor will quit limit set mode automatically



### 3. Favorite intermediate limit position setting

Tips: Intermediate limits can only be set between top & bottom limits. you can set 4 favorite intermediate limits

After you set the intermediate limit, if you press UP or DOWN button one time, motor will move from current position to next limit position; if you press UP or DOWN button two times quickly (within 1 second), motor will skip all the intermediate limits, moving to top or bottom limit position



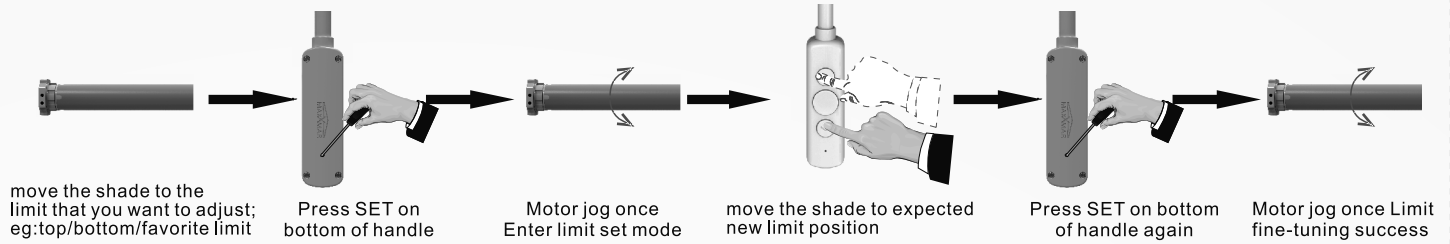
## ⚠️ WARNING STRANGULATION HAZARD

YOUNG CHILDREN CAN BE STRANGLED BY CORDS. IMMEDIATELY REMOVE THIS PRODUCT IF A CORD LONGER THAN 22 CM OR A LOOP EXCEEDING 44 CM AROUND BECOMES ACCESSIBLE.

## ⚠️ MISE EN GARDE RISQUE D'ÉTRANGLEMENT

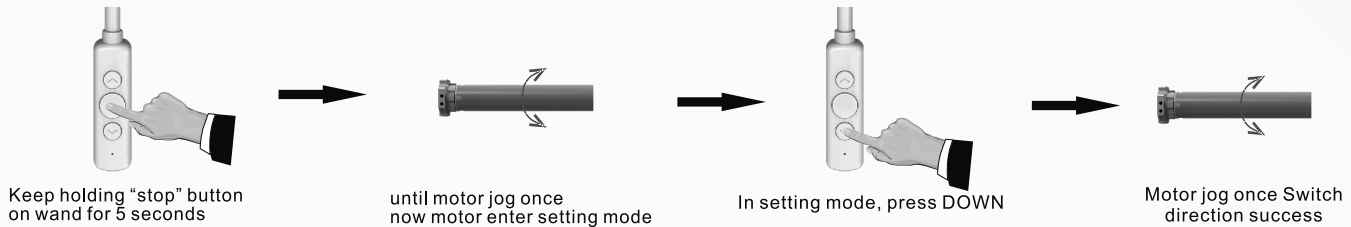
LES ENFANTS EN BAS ÂGE PEUVENT S'ÉTRANGLER AVEC DES CORDES. ENLEVEZ IMMÉDIATEMENT CE PRODUIT SI UNE CORDE MESURANT PLUS DE 22 CM DEVIENT ACCESSIBLE OU SI LE CONTOUR D'UNE BOUCLE DE PLUS DE 44 CM DEVIENT ACCESSIBLE.

#### 4. Adjust limit position



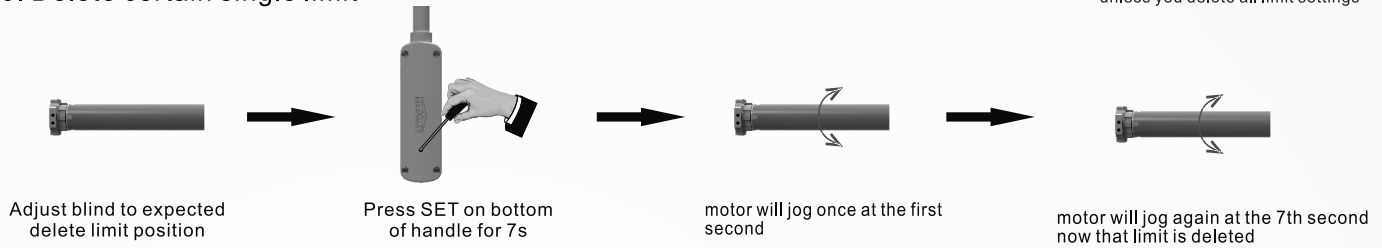
#### 5. Switch motor running direction

Tips: if you press up/down on wand, while the shade go to opposite direction then you could switch motor running direction



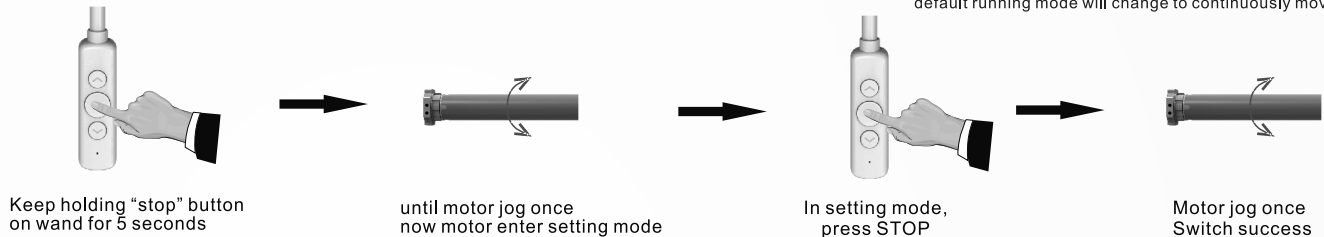
#### 6. Delete certain single limit

Tips: the first limit can not be deleted by this method unless you delete all limit settings



#### 7. Switch motor running mode

Tips: before top & bottom limits finish settings, motor default running mode is dot moving; After motor top & bottom limits finish setting, its default running mode will change to continuously moving mode

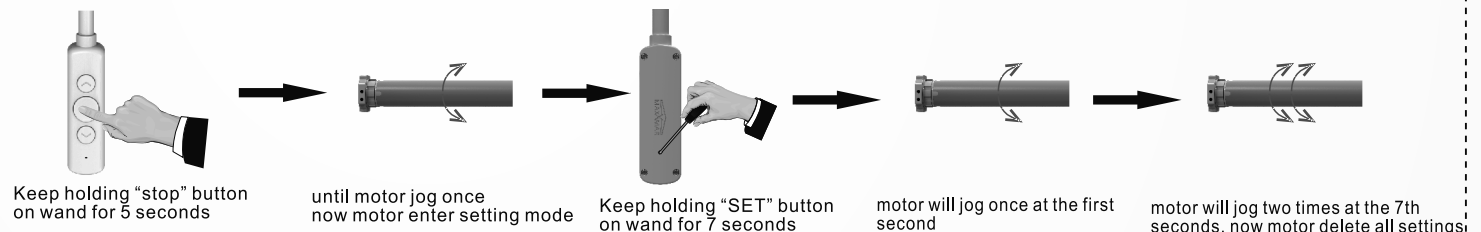


#### 8. Delete all settings (Factory reset)

There are two ways to do factory reset

Tips: this operation will delete all the limits settings and restore to factory default mode

##### Method 1



##### Method 2

