



CELLULAR SHADES INSTALLATION INSTRUCTIONS

CHILD SAFE



MAXXMAR WINDOW FASHIONS

150 Bartor Road, Toronto, Ontario M9M 1H1

Tel: 416-742-6299 - Toll Free: 1-866-916-6299 - Fax: 416-742-1772

www.maxxmar.com



⚠️ WARNING STRANGULATION HAZARD

Young children can be strangled by cords. Immediately remove this product if a cord longer than 22 cm or a loop exceeding 44 cm around becomes accessible.

⚠️ MISE EN GARDE RISQUE D'ÉTRANGLEMENT

Les enfants en bas âge peuvent s'étrangler avec des cordes. Enlevez immédiatement ce produit si une corde mesurant plus de 22 cm devient accessible ou si le contour d'une boucle de plus de 44 cm devient accessible.

Getting Started

A few simple tools are required:

- Measuring tape
- Power drill, drill bits (1/16") and/or screw drivers
- Phillips driver bit
- Pencil
- Level



Additional fasteners other than those sent with your shade may be required depending on the mounting surface. Wallboard and plaster require the use of anchors such as expansion toggle bolts. Brick, tile or stone need special plugs and drill bits. Remember to always pre-drill holes in wood to avoid splitting.

Bracket Installation

Shades are shipped with the required number of brackets for proper installation. End brackets should be located approximately 3" from either end. Depending on the width of the shade, additional brackets may be necessary, evenly spaced between the two end brackets. Using the installation bracket as a template, measure to the edge of the bracket and mark the hole locations with a pencil for drilling. Brackets must be in line and level. Shim brackets on inside mounts if necessary. The head rail must be level for the shade to operate properly.

| Shade Width | # of Brackets |
|-------------|---------------|
| Up to 40" | 2 |
| 40" - 72" | 3 |
| 72" - 84" | 4 |
| 84" and up | 5 |



Make Sure Mounting Surface is Level

Installation Instructions

1 Everything needed to install your shade.

1 Shade
2 Brackets/Screws

2 Determine inside/ceiling, outside or side mount.

2 Optional side mount for shades 60" or less: assemble brackets.

3 Place shade in desired location, mark corners.

Inside/Ceiling Mount Outside Mount

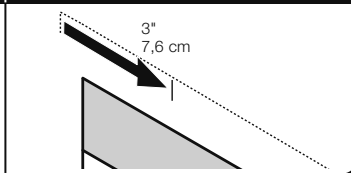
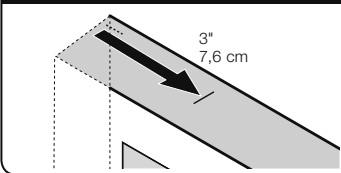
Optional Side Mount

4

Measure in from shade edge on both ends and mark.

Inside/Ceiling Mount

Outside Mount

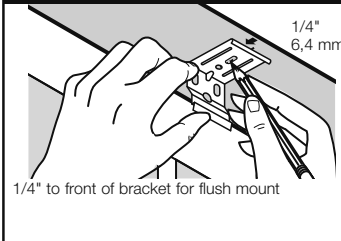


5

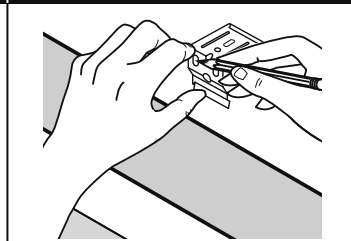
Mark screw locations; center additional brackets, if applicable.

Inside/Ceiling Mount

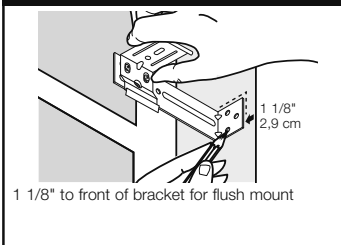
Outside Mount



1/4" to front of bracket for flush mount



Optional Side Mount



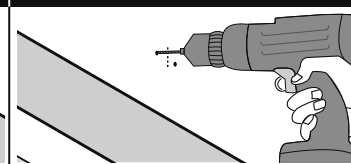
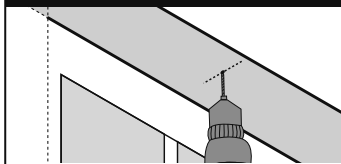
1 1/8" to front of bracket for flush mount

6

Drill holes.

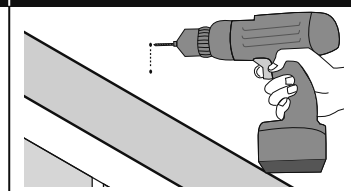
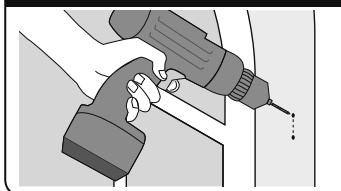
Inside/Ceiling Mount

Outside Mount



Optional Side Mount

Optional Extension Bracket

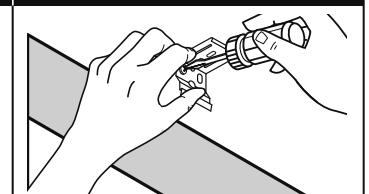
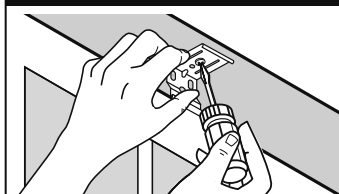


7

Screw brackets into place.

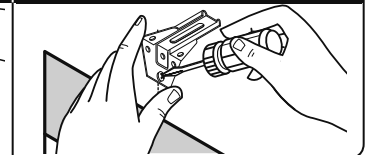
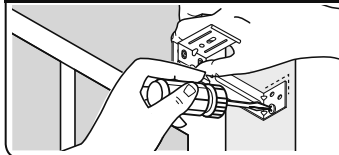
Inside/Ceiling Mount

Outside Mount



Optional Side Mount

Optional Extension Bracket

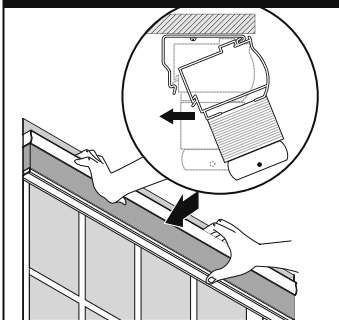


8

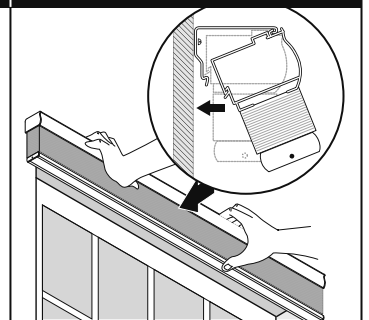
Mount shade into brackets.

Inside/Ceiling Mount

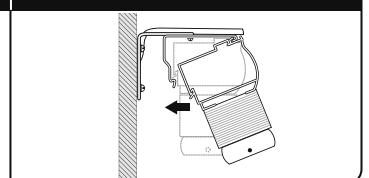
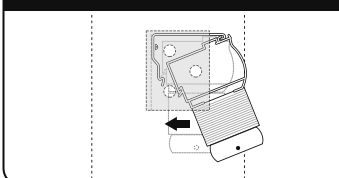
Outside Mount



Optional Side Mount



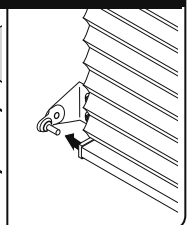
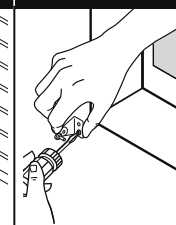
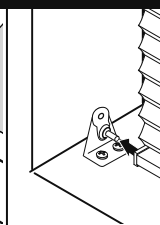
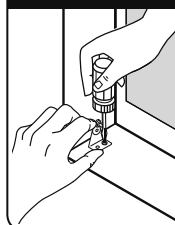
Optional Extension Bracket



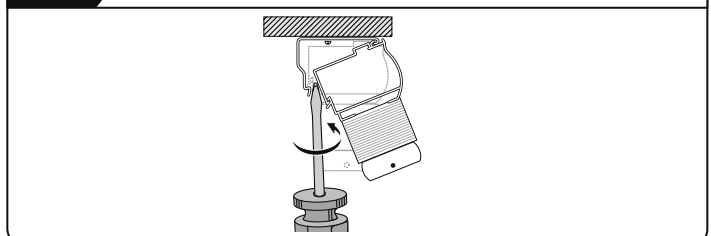
Optional: mount hold-down brackets.

Inside/Ceiling Mount

Outside Mount



Shade removal.

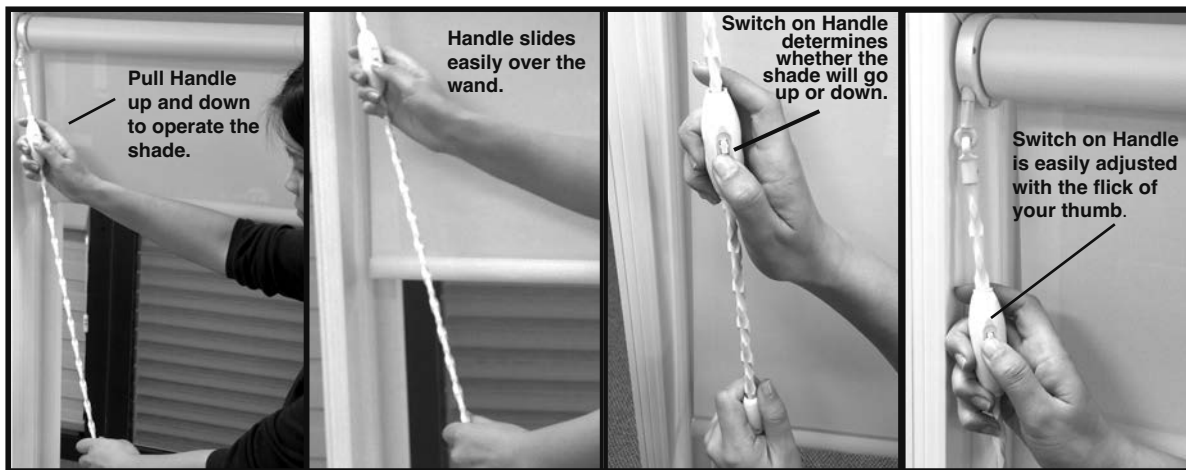
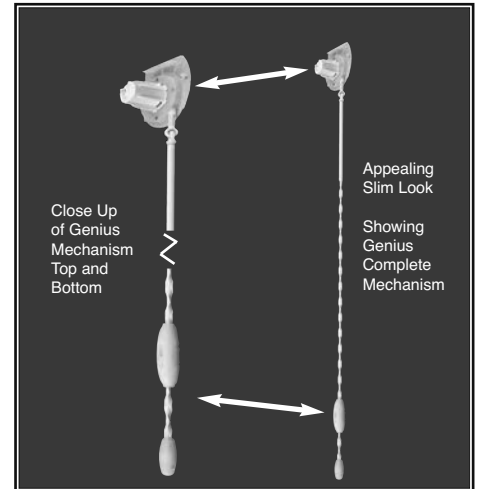


Genius - Basic Operation

The Genius mechanism operates your shades by merely pulling up and down on the handle. The handle features a switch that determines whether the shade goes up or goes down.

Please Note

The photos referenced below may show a different shade product, however, the basic operation for Genius is the same across all product lines.



Cordless Cellular Shades

can be operated by pushing up or pulling down on the bottomrail.

