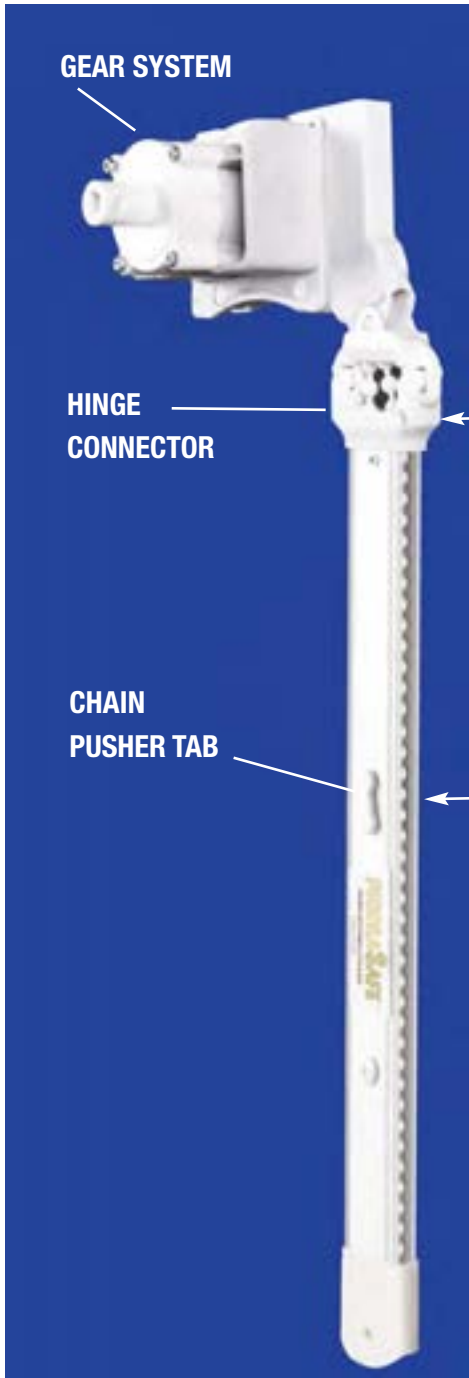


NEW INNOVATIVE PATENTED MECHANISM designed for lifting **HEAVIER BLINDS** like 2" Wood and Faux Wood Horizontal Blinds.



DecoraSafe™ Uni-Control - LightLift



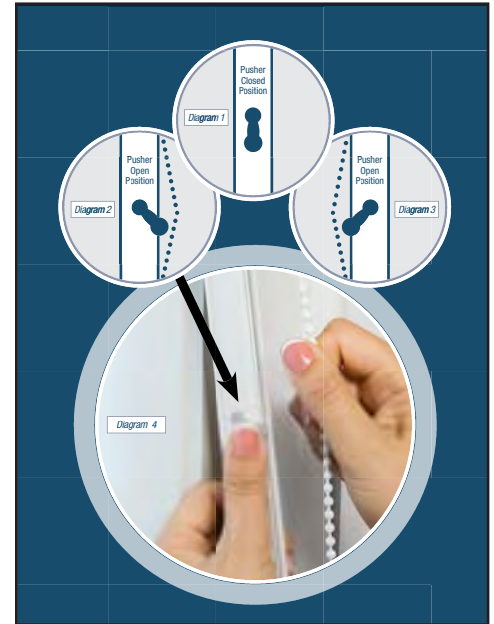
DecoraSafe™ Uni-Control - LightLift's innovative patented gear system enables you to easily and smoothly lift heavy blinds.

DecoraSafe™ Uni-Control - LightLift connects directly to the clutch mechanism of the shade with a **hinge connector**. This flexible hinge connector allows you to operate the shade from various angles and positions for greater ease, accessibility and convenience.

DecoraSafe™ Uni-Control - LightLift utilizes the **NEW Exclusive and Patented Pusher System**.

A **chain pusher tab** exposes a small section of the chain to enable you to manually pull the chain and operate the shade.

(See image to the right for greater detail.)



Pusher System

Maxxmar's **NEW Exclusive Patented Operating Mechanism**

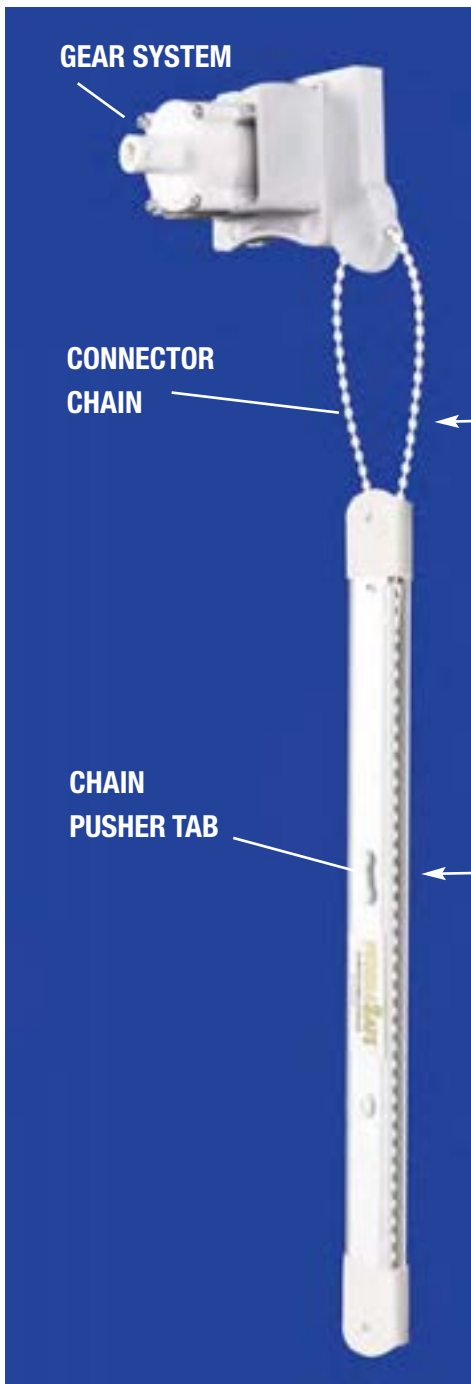
The Pusher System operates with the **Chain Pusher Tab** (see Diagram 1). By pushing the chain pusher tab shown (see Diagram 2 & 3), you get access to a small section of the chain to operate the shade (see Diagram 4) and, when done, just release the chain and it will automatically retract into the wand.

The chain remains concealed and inaccessible to children at all times.

NEW INNOVATIVE PATENTED MECHANISM designed for lifting **HEAVIER BLINDS** like 2" Wood and Faux Wood Horizontal Blinds.



DecoraSafe™ Uni-Control - LightLift



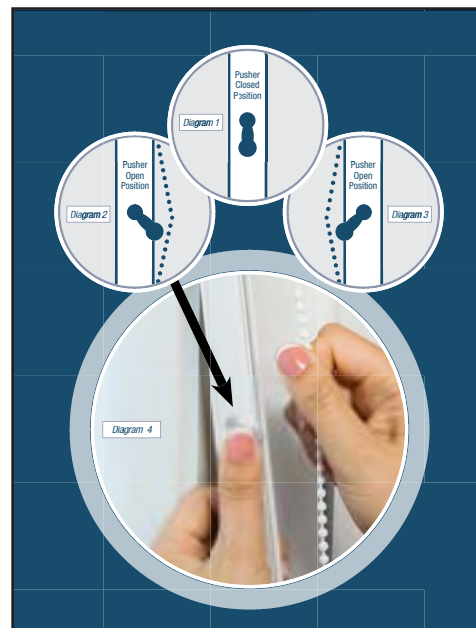
DecoraSafe™ Uni-Control - LightLift's innovative patented gear system enables you to easily and smoothly lift heavy blinds.

DecoraSafe™ Uni-Control - LightLift connects directly to the clutch mechanism of the shade with a **flexible chain**. This flexible chain, like a hinge connector, allows you to operate the shade from various angles and positions for greater ease, accessibility and convenience.

DecoraSafe™ Uni-Control - LightLift utilizes the **NEW Exclusive and Patented Pusher System**.

A **chain pusher tab** exposes a small section of the chain to enable you to manually pull the chain and operate the shade.

(See image to the right for greater detail.)



Pusher System

Maxxmar's **NEW Exclusive Patented Operating Mechanism**

The Pusher System operates with the **Chain Pusher Tab** (see Diagram1). By pushing the chain pusher tab shown (see Diagram 2 & 3), you get access to a small section of the chain to operate the shade (see Diagram 4) and, when done, just release the chain and it will automatically retract into the wand.

The chain remains concealed and inaccessible to children at all times.

HeavyLift™ - Cordless

For 2" Wood & Faux Wood Horizontal Blinds

Maxxmar makes the IMPOSSIBLE ... POSSIBLE



HeavyLift™ - Cordless allows you to lift a 2" Wood or Faux Wood Horizontal Blind by simply raising the blind from the bottomrail in the same fashion as Maxxmar Miracle Lift System.

This innovative system eliminates the use of dangerous cords making your home safer in the presence of children.

CHILD PROOF YOUR SHADES & BLINDS

Maxxmar's NEW'S CHILD SAFETY SOLUTION is designed for **EASY INSTALLATION** by **HOMEOWNERS** who want to protect their children by **converting their existing chain operated shades and blinds to CHILD SAFE WINDOW COVERINGS.**



EASY INSTALLATION

Existing Chain Operated Shade

STEP 1

Remove Chain Tensioner on existing shade if applicable.

Insert Chain into the Wand engaging the spring load mechanism.

STEP 2

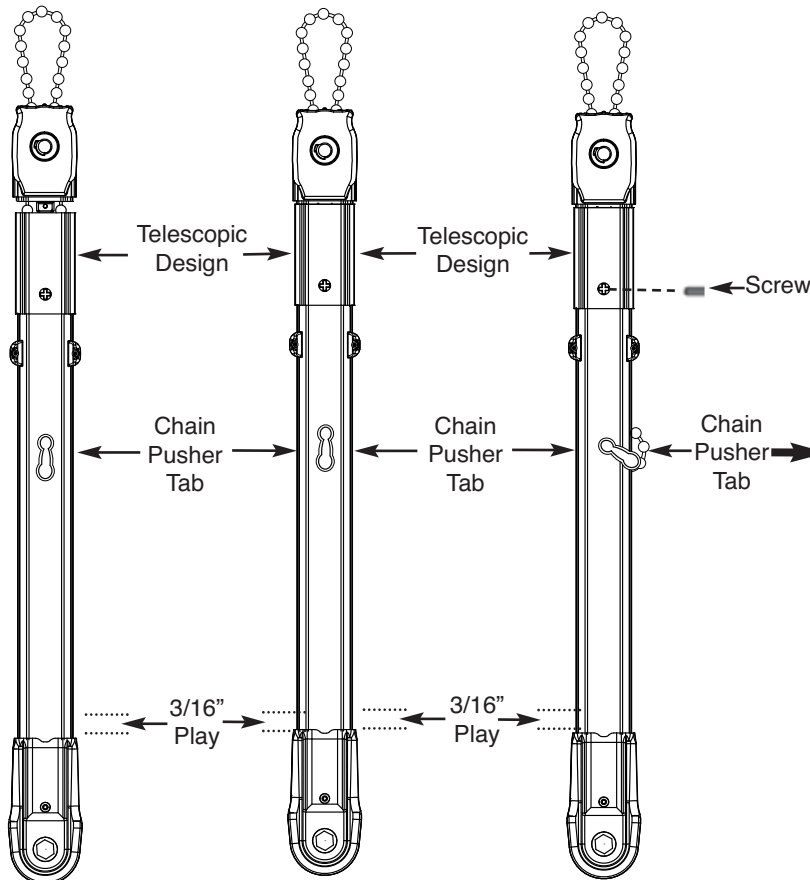
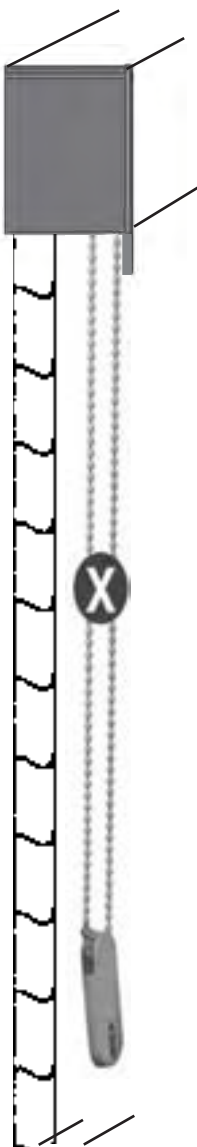
The Wand has a telescopic design. Adjust the length of the Wand accordingly.

STEP 3

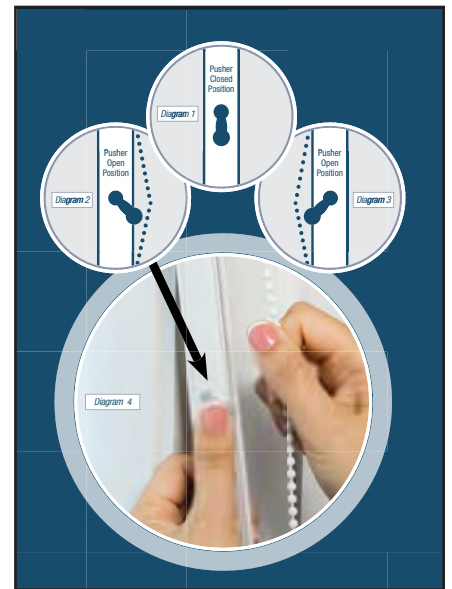
Insert Screw provided to complete installation.

The Chain Pusher Tab will now allow you to access the chain to operate your shade. (see diagram to the right)

Your Shade is now Child Proof.



Pusher System



Maxxmar's NEW Exclusive Patented Operating Mechanism

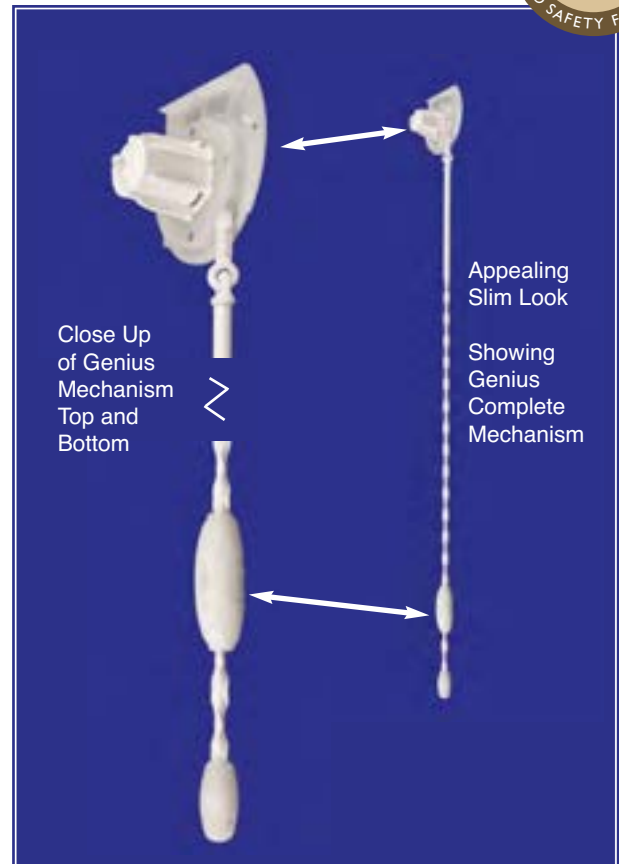
The Pusher System operates with the **Chain Pusher Tab** (see Diagram 1 above). By pushing the chain pusher tab shown (see Diagram 2 & 3 above), you get access to a small section of the chain to operate the shade (see Diagram 4 above) and, when done, just release the chain and it will automatically retract into the wand.

The chain remains concealed and inaccessible to children at all times.

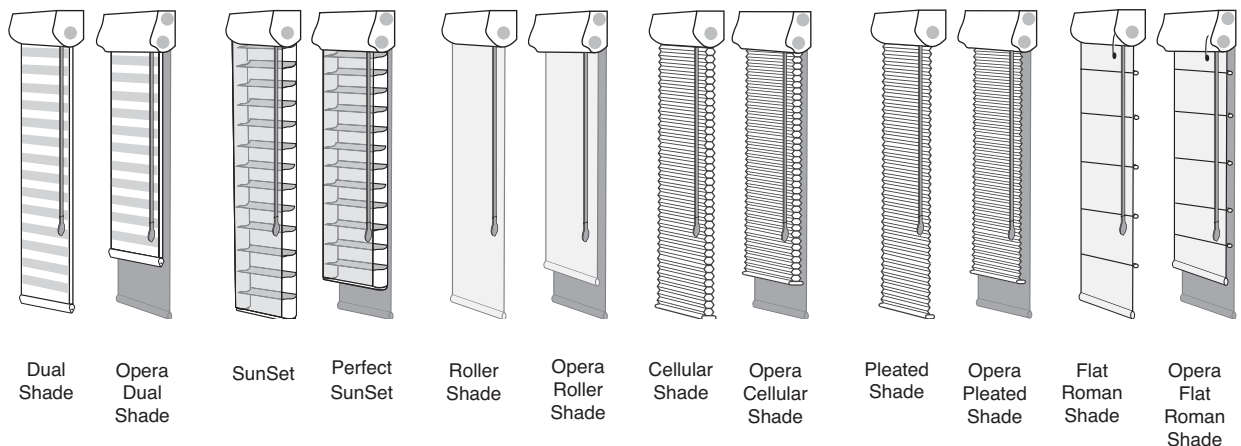
Revolutionary Solution for Child Safety



- New Proprietary Solution for Child Safety.
- State-of-the-art mechanism that eliminates the use of cords/chains.
- Revolutionary as nothing exists like it on the market.
- Available for inside mounts and outside mounts.
- Available with:
 - Dual Shades & Opera Dual Shades
 - SunSet Shades & Perfect SunSet
 - Roller Shades & Opera Roller Shades
 - Cellular Shades & Opera Cellular Shades
 - Pleated Shades & Opera Pleated Shades
 - Roman Shades & Opera Roman Shades



Genius is Available on the Following Shades & Blinds



Genius shown with available blinds and shades.

Opera Shades come with 2 **Genius wands** one on the left (not shown above) and the other on the right side of the shade.

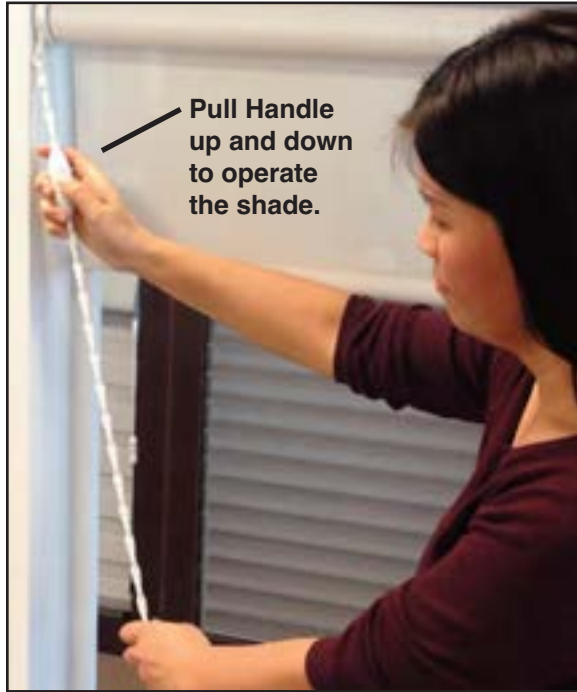
Rear Room Darkening Shade shown in **Closed Position** in all Opera Shades & Perfect SunSet.

GENIUS (patent pending)

Revolutionary Solution for Child Safety

GENIUS - Easy to Operate

The Genius mechanism operates your shades by merely pulling up and down on the handle.



Genius is shown above with an open-roll Roller Shade - Genius is also available with cassette.

The handle features a switch that determines whether the shade goes up or goes down.



Genius is shown above with an open-roll Roller Shade - Genius is also available with cassette.

GENIUS (patent pending)

Revolutionary Solution for Child Safety

The Revolutionary **GENIUS** (patent pending) is another elegant **Child Safe Solution** to complement any shade or blind.



Genius shown with Dual Shades



Genius shown with SunSet Shades



Miracle Lift

Cordless & Child Proof



- New innovative system that eliminates the use of cords and chains on shades.
- Raise or lower the shade to your desired position without the use of spring back motion on the shade.
- Available on: **Roller and Opera Roller Shades as well as Dual and Opera Dual Shades.**

Notes:

On the Opera both front and back shades must be Miracle Lift. **No other combinations.**

2 on 1 and 3 on 1 Headrail not available on Miracle Lift.



Miracle Lift
available with
Roller Shades
and
Opera Roller Shades



Miracle Lift
available with
Dual Shades
and
Opera Dual Shades

BetterFIT™

shade collection



BetterFIT™

shade collection

MOST ATTRACTIVE AND INNOVATIVE SHADE ON THE MARKET TODAY

BetterFIT™ is the most attractive and innovative window shade available on the market today. It's unique because the window shade fits neatly into a stylish frame which moves together with the windows and doors when they are opened and closed, giving you the perfect combination of shade and ventilation.

WILL COMPLEMENT ANY INTERIOR DESIGN SCHEME

BetterFIT™ shades are offered in different frame colours for both roller and cellular shades which are also offered in a wide range of colours, patterns and textures that will complement any décor.

INSTALLATION IS QUICK & EASY FOR BOTH WINDOWS AND DOORS

BetterFIT™ is revolutionary system, manufactured using genuine Perfect Fit technology that enables window shades to be fitted perfectly onto most double glazed windows and doors. There is no drilling or screwing into your window frames for a quick, easy and clean installation.



WILL FIT MOST TYPES OF WINDOWS

BetterFIT™'s unique bracket system allows it to be fitted to many types of windows. This is an excellent choice for European style casement windows that open towards the inside of a room. BetterFIT™'s alternative magnetic system is also available for specific applications.

CHILD SAFE

BetterFIT™ shades are child safe because there are no loose operating cords or loops leaving window sills clutter free. The ultimate in style and safety.

REDUCED LIGHT GAPS FOR GREATER PRIVACY

The BetterFIT™ shade fits neatly onto the window and enhances your privacy because there are no gaps down the side of the blind.

EASILY CLEANED

The frame is easily removable from the bracket system to allow for quick cleaning.



BetterFIT™

shade collection

BetterFIT™

cellular shade



◆ **CELLULAR CORDLESS SHADE**

◆ **CELLULAR CORDLESS TDBU**

◆ **CELLULAR DAY/NIGHT SHADE**

- price as two separate shades from their respective price grids.

Size Standards

- Minimum Width: **6"**
- Maximum Width: **55"**
- Maximum Height: **118"**

Framing Colour Selection

- White - 0001
- Light Grey - 0193
- Silver - 0088
- Steel - 0288
- Golden Oak - 0171
- Dark Brown - 0156
- Mahogany - 0374

BetterFIT™

shade collection

BetterFIT™

roller shade



Size Standards

- Minimum Width: **14.5"**
- Maximum Width: **55"**
- Maximum Height: **please consult chart per fabric.**

Framing Colour Selection

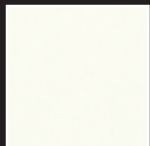
- White - 0001
- Light Grey - 0193
- Silver - 0088
- Steel - 0288
- Golden Oak - 0171
- Dark Brown - 0156
- Mahogany - 0374

BetterFIT™

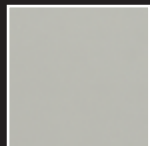
shade collection



BetterFIT™ FRAMING IS AVAILABLE IN THE FOLLOWING COLOURS



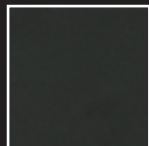
WHITE
0001



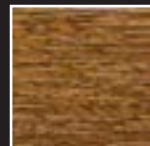
**LIGHT
GREY**
0193



SILVER
0088



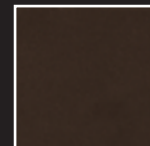
STEEL
0288



**GOLDEN
OAK**
0171



MAHOGANY
0374



**DARK
BROWN**
0156